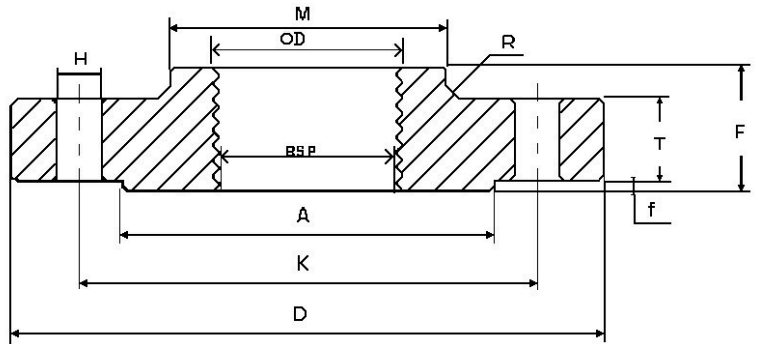




Tighten Up

SPEC SHEET

TABLE 16 THREADED FLANGE



SIZE RANGE / DIMENSIONS												
BSP	METRIC (mm)	D (mm)	K (mm)	L (mm)	A (mm)	C (mm)	N1 (mm)	N2 (mm)	H1 (mm)	R2	NO. HOLES	
1½"	40	133.4	98.6	14.5	44.9	6.4	46.3	61.9	12.7	1.6	4	
2"	50	152.4	114.3	17.5	56.7	7.9	58	74.6	12.7	1.6	4	
2½"	65	165.1	127	17.5	72.2	7.9	73.7	90.5	15.9	1.6	4	
3"	80	184.2	146.1	17.5	85	9.7	86.5	106.4	15.9	1.6	4	
4"	100	215.9	177.8	17.5	110.1	9.7	111.6	133.4	19.1	3.2	4	
6"	150	279.4	235	17.5	164.5	12.7	166	185.7	19.1	3.2	8	

CHEMICAL COMPONENT				
C (%)	Mn (%)	P (%)	S (%)	Si (%)
0.12 - 0.20	0.30 - 0.67	≤ 0.045	≤ 0.45	≤ 0.30

TECHNICAL DATA:

- Maximum Temperature: 0-350°C
- Tensile Strength: 375-460MPA
- Hardness: HB120 - 140 (Brinell)
- Elongation Rate: ≥26%
- Suitable Applications: Water, Oil, Gas, Petro-Chemical
- Material: Forged Carbon Steel